



# 2007 Illinois School Profile

## A Brief Guide for Parents

This Profile provides information about our school's students, teachers, student test scores, class sizes and district's budget. For more details, please contact school staff or go to the Illinois State Report Card link on the ISBE web site: [www.isbe.net](http://www.isbe.net).

MOUNT VERNON HIGH SCHOOL  
MT VERNON TWP HSD 201  
MOUNT VERNON, ILLINOIS  
Grades: 9 10 11 12  
RCDS Code: 25-041-2010-17-0001

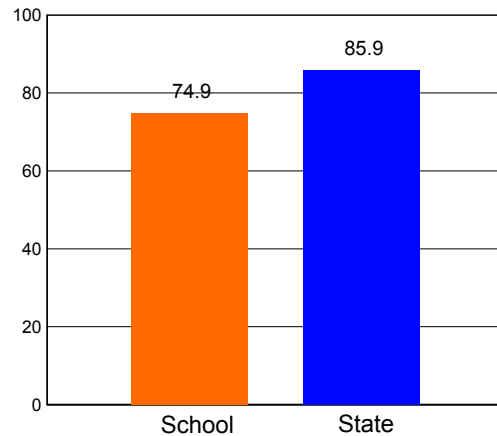
### Key Statistics

Number of Students	1,319
Attendance Rate	90.0

#### AVERAGE CLASS SIZE

	School	State
Kindergarten		
Grade 1		
Grade 2		
Grade 3		
Grade 4		
Grade 5		
Grade 6		
Grade 7		
Grade 8		
High School	10.9	18.9

#### HIGH SCHOOL GRADUATION RATE



### Student Information

#### RACIAL/ETHNIC BACKGROUND (%)

	School	State
White	81.1	54.9
Black	13.5	19.6
Hispanic	1.4	19.3
Asian/Pacific Islander	0.8	3.8
Native American	0.5	0.2
Multiracial/Ethnic	2.7	2.2

#### ADDITIONAL INFORMATION (%)

	School	State
Low Income	29.6	40.9
Limited English Proficient	0.0	7.2
Mobility	18.5	15.2





## Teacher Information

	District *	State
Average Teaching Experience (Years)	13.6	12.9
% Teachers with Emergency or Provisional Credentials	1.2	1.5
Average Teacher Salaries	\$53,386	\$58,275
% Teachers with Graduate Degrees	49.5	52.3

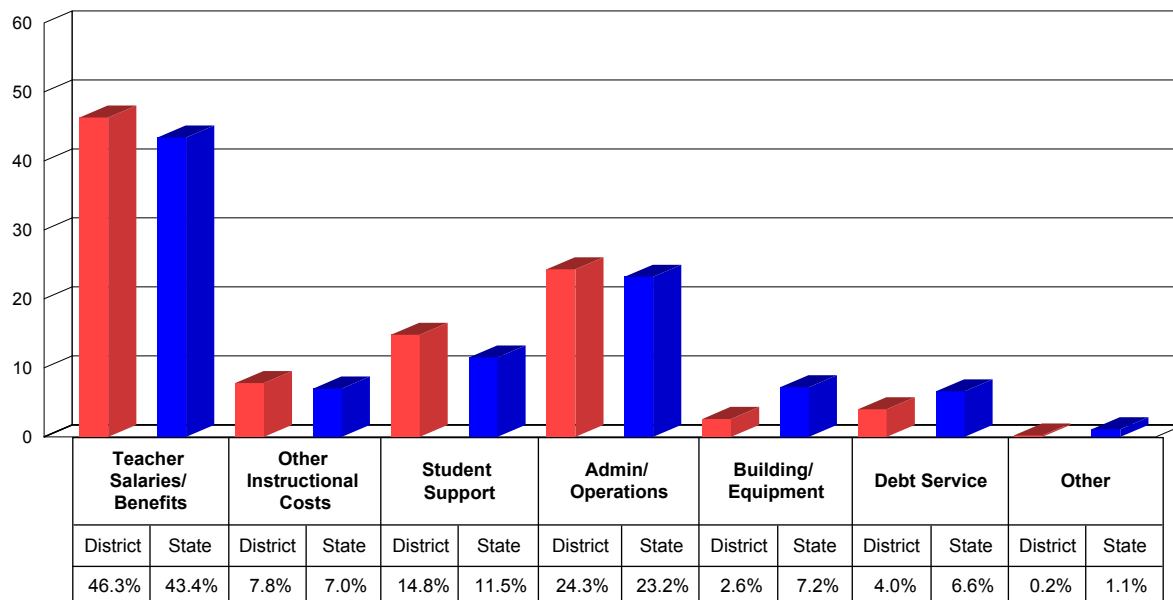
\* These represent school level data in the case of charter schools.



## School District Finances

This chart shows how we spent our money as a district in the 2005-06 school year. Instructional costs include books and classroom materials. Student support includes counseling, transportation and food service. Administration/operations includes principal salaries and the cost of janitorial services. Building/equipment and debt service include the costs of school facilities.

### DISTRICT SPENDING

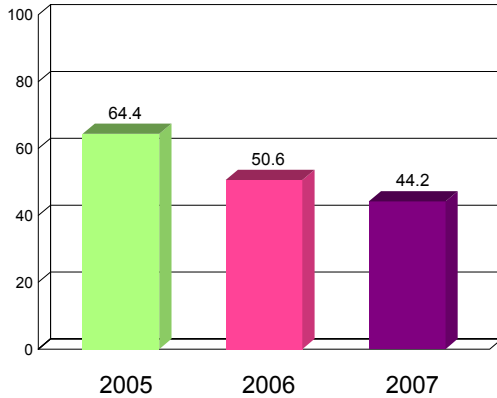




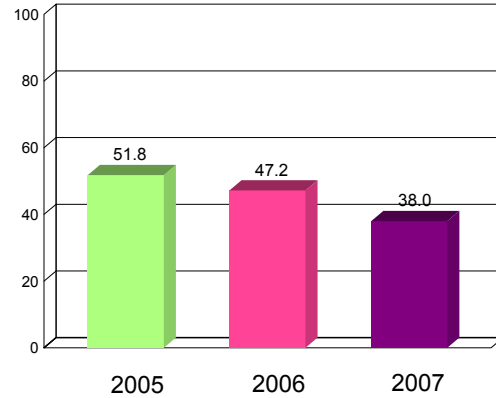
How our students do on state tests is just one way to measure their academic achievement. You can compare the percentage of our students that meet or exceed standards on statewide tests to the statewide percentage. You should also look at how this year's results compare to previous years'. The Illinois Standards Achievement Test (ISAT) is the state test administered to students in selected elementary grades. The Prairie State Achievement Examination (PSAE) is the state test that students take in the 11th grade.

## GRADE 11 PSAE - READING AND MATHEMATICS (PERCENT MEETING OR EXCEEDING STANDARDS)

GRADE 11 READING



GRADE 11 MATHEMATICS



### 2007 - Grade 11 PSAE Reading, Mathematics and Science (Percent Meeting or Exceeding Standards)

	Reading	Mathematics	Science
School	44.2	38.0	30.8
State	54.1	52.7	51.0





## Adequate Yearly Progress

The No Child Left Behind Act and Illinois law require the State to measure whether our school is making Adequate Yearly Progress (AYP). AYP is based on the percent of students that meet/exceed standards on state tests, both as a whole and by different subgroups. Schools must also meet minimum attendance or graduation rates. If a school does not make AYP in the same subject area for two consecutive years, it is identified for School Improvement.

Is this school making Adequate Yearly Progress (AYP)?	No
Is this school making AYP in Reading?	No
Is this school making AYP in Mathematics?	No

Has this school been identified for School Improvement according to the AYP specifications of the federal No Child Left Behind (NCLB) Act?	Yes
2007-08 Federal Improvement Status	Choice
2007-08 State Improvement Status	Academic Early Warning

This School Profile was prepared for you in partnership with the Illinois State Board of Education.



**Illinois State  
Board of Education**

Rod Blagojevich, Governor

