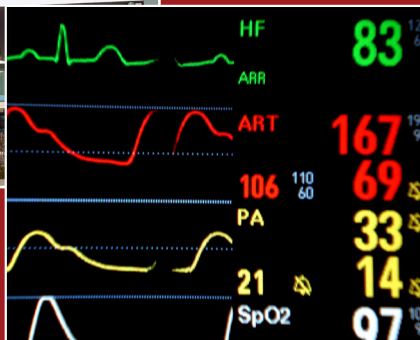


REND LAKE COLLEGE



... setting the standard
for leadership
and excellence.



468 N KEN GRAY PKWY
INA, ILLINOIS 62846

REND LAKE COLLEGE

REND LAKE COLLEGE

ASSOCIATE DEGREE NURSING



www.rlc.edu

Associate Degree Nursing

The Associate in Applied Science Degree in Nursing is offered to provide career mobility for people who have successfully completed and graduated from an approved Practical Nursing program. The two-semester program builds on nursing skills and knowledge acquired through training / practice as a practical nurse. Learning occurs in classroom, clinical and laboratory settings. The program prepares students to practice as professional registered nurses – as defined in the Illinois Nurse Practice Act – at a beginning level of expertise.

EMPLOYMENT

The program is approved by the Illinois Department of Professional Regulation. Graduates are prepared to assume responsibility for lifelong learning and professional growth as individuals / professionals. A variety of community settings offer career choices – hospitals; clinics; skilled, long-term and residential care facilities; community health and governmental agencies, and other facilities.

FOR MORE INFORMATION, PLEASE CONTACT:

Rend Lake College
Allied Health Division
 468 N Ken Gray Pkwy • Ina, IL 62846
 Phone ~ (618) 437-5321, Ext. 1251
 Toll-Free (In-District) ~ 1-800-369-5321
 advising@rlc.edu

ASSOCIATE DEGREE NURSING

Associate in Applied Science Degree

GENERAL EDUCATION COURSES

In addition to successful completion of an approved Practical Nursing program, a total of 18 semester hours of General Education is required prior to beginning the ADN program. A grade of “C” or better must be achieved in each course:

ENGL 1101	Rhetoric and Composition I ¹	3
MICR 1101	Basic Microbiology	4
PSYC 2101	Introduction to Psychology	3
ZOO 1105	Anatomy and Physiology I	4
ZOO 1106	Anatomy and Physiology II	<u>4</u>
		18

NURSING COURSES (30 hours required)

Each course in the ADN curriculum must be completed with a grade of “C” or better to meet program requirements.

First Semester		Cr. Hrs.
ADN 1201	Intro to Conceptual Framework	3
ADN 2203	Metabolic / Endocrine Nursing Interventions	2
ADN 2206	Respiratory Nursing Interventions	2
ADN 2211	Gastrointestinal / Gen.-Urinary Nurs. Int.	3
ADN 2214	Cardiovascular Nursing Interventions	<u>3</u>
		13
Second Semester		
ADN 1204	Neurological-Sensory Nursing Interventions	2
ADN 2204	Community Health Nursing	2
ADN 2208	Nursing Today and Tomorrow	2
ADN 2209	Maternal-Neonate Nursing Interventions	2
ADN 2210	Pediatric Nursing Interventions	3
ADN 2212	Orthopedic / Dermatological Nursing Interv.	3
ADN 2213	Psychiatric Nursing Interventions	<u>3</u>
		15

A program of study will be planned at the time of acceptance into the Associate Degree Nursing program.

¹ Prerequisite course(s) may be required.

NOTE: Reading course(s) may be required.

NOTE: Prior to graduation, the student must meet state requirements concerning the Illinois and Federal Constitution.

PROGRAM REQUIREMENTS

This is not an open-entry program. Application requirements include:

- Admission to Rend Lake College
- Graduation from an accredited high school or GED certificate
- Graduation from an approved Practical Nursing program
- Successful completion of prerequisites
- Passing score on pre-entrance exam
- Attending an advisement meeting
- Documentation of health screenings and immunizations
- Proof of current personal health insurance coverage
- Proof of sound health by a physician, physician assistant or nurse practitioner
- Passing of a background check
- Current competency in American Heart Association Healthcare Provider CPR
- Passing a test dealing with the Health Insurance Portability and Accountability Act (HIPAA)
- Accepting provisions of RLC Allied Health Division Substance Abuse Policy, submit to drug screening

TESTING INFORMATION

The pre-entrance exam is a standardized test encompassing reading and verbal skills and basic math knowledge. Testing is scheduled at intervals during the year. Contact the Allied Health Division for details.

TRAVEL

ADN students attend classes on campus. Clinical rotations require travel to Southern Illinois clinical facilities.

EXPENSES

- Pre-entrance exam fee
- Fees (lab / insurance)
- Transportation costs
- Uniforms / shoes for clinical rotations
- Physical exam, immunizations / lab tests
- Background check fee
- Personal health insurance coverage
- Graduation fee
- Application fee for NCLEX-RN exam
- Tuition
- Books

LICENSURE ELIGIBILITY

Upon graduation, the student will be eligible to apply to write the NCLEX-RN (National Council Licensure Examination for Registered Nurses). Completion of the program is not a guarantee of RN licensure.

FINANCIAL AID

The college tries to assist individuals who demonstrate financial need, and in most cases, financial aid is available. The college has been approved as a participating institution for grants made by the Illinois Student Assistance Commission and also is approved for federal student aid programs, including veterans benefits. Locally endowed scholarships are available to full-time students through the RLC Foundation.